

User Guide

©2003 Q-Technologies (Mallard Corporation (Australia) Pty Ltd)

**Registered Office:** 4 Simla Crt, Heathmont, Victoria, Australia  
**Postal Address:** PO Box 523, Heathmont, 3135, Victoria, Australia  
**Website:** <http://www.Q-Technologies.biz>  
**Phone:** +614 0057 7232

# CONTENTS

---

## TABLE OF CONTENTS

<b>Contents.....</b>	<b>3</b>
<b>Introduction.....</b>	<b>4</b>
Main Features:.....	4
Potential Uses:.....	4
<b>Managing the Slide List.....</b>	<b>5</b>
.....	5
Create a new list.....	5
Edit the list.....	5
Reorder the List.....	6
Select Slide.....	6
<b>Previewing Slides.....</b>	<b>7</b>
<b>Presenting the Slide Show.....</b>	<b>8</b>
Presentation Controls.....	8
Presentation Modes.....	9
Mini Controller.....	9

# INTRODUCTION

---

Q-Display is an application optimized for the rapid presentation of digital photos and movies (collectively referred to as slides in this application). It is best suited to situations where a large number of slides need to be shown in a smooth manner.

## Main Features:

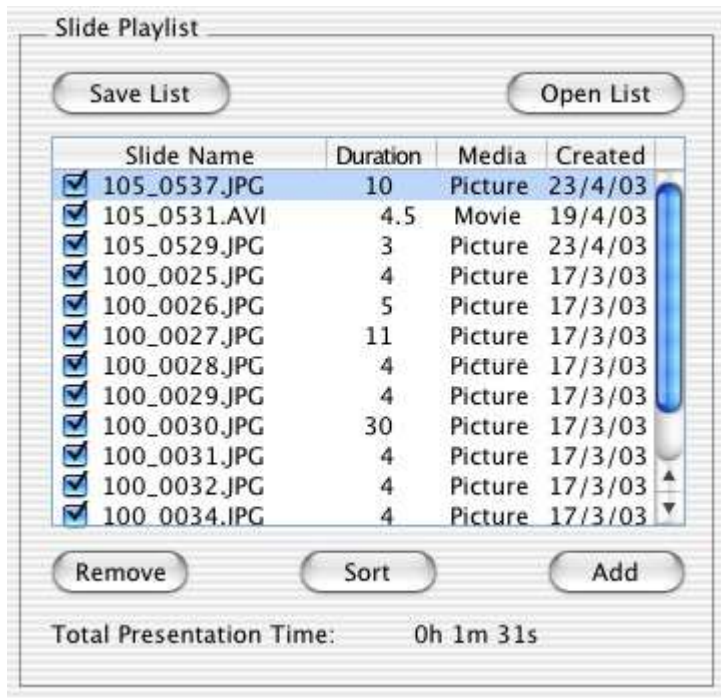
- Load movies/pictures using *Drag & Drop* from the Finder into the slide list.
- Display full screen on any display device supported by your hardware, for example on a TV or second monitor. The display can easily be switched to another at any time.
- Your presentation can be controlled from a second display. This allows upcoming slides to be previewed and skipped even while the presentation is running.
- Create a list of slides. There is also the option to play only a portion of the list if required.
- Easily sort or randomize the list.
- Individual display times can be specified for each picture. The display times can be adjusted as the presentation progresses.
- The whole presentation can be repeated indefinitely to allow for kiosk type applications.
- Opens any picture or movie that Apple's Quicktime can read. As Quicktime supports more formats, Q-Display will automatically be able to read them.

## Potential Uses:

- Formal presentations that revolve around pictures and movies.
- Kiosk type facility where promotional pictures can be intermixed with movies.
- Display a slide show of your latest holiday on your TV using the pictures and movies taken from your digital camera. This could be done with more flexibility than if you created a DVD.

# MANAGING THE SLIDE LIST

---



## Create a new list

When the application launches it creates a blank list that you can immediately start adding files to. If at any time you need to create a new list then choose File Menu->New (or Command-N).

## Edit the list

Use the 'Add' button on the Control Center to add a slide (or Slides Menu->Add Slide...). You can also add slides by dragging the pictures/movies from the Finder onto the list area. A slide can be removed using the 'Remove' button (or the menu option). The list can be cleared entirely by using 'Select All' (Edit Menu), then 'Remove All Selected' (Slides Menu).

Any picture or movie that your installation of Quicktime can read can be added to the list. See <http://www.apple.com/quicktime/products/qt/specifications.html> for what formats the latest version of Quicktime supports. Digital cameras often use the JPEG format, this has been supported by Quicktime for a long time. Although Flash movies and PDF files can be read by Quicktime, their behavior inside Q-Display is not optimal with this release.

## Reorder the List

To change the order of the list simply drag the slide to its new location (you will see a fine black line showing where it will be inserted).

The list can also be sorted in the following ways:

- Alphanumeric ascending
- Alphanumeric descending
- Random shuffle
- Oldest (by date)
- Newest (by date)

These options are in the 'Sort slides by' sub menu of the Slides menu.

## Picture Display Time

Individual display times can be set for each picture by highlighting the slide and choosing 'Edit Display Time' from the Slides menu. The individual times can be reset to the default by choosing 'Set All Display Times to Default' from the Slides menu. The default time is set in the application preferences.

## Select Slide

To select individual slides use the check box next to the item. To select all use 'Select All' (Edit Menu) and to de-select all the slides use 'Deselect All' (Edit Menu). You can also invert the selection (using 'Invert Selection').

# PREVIEWING SLIDES

---



Slides can be previewed using the preview area of the Control Center. To turn this feature on, click the check box named 'Show Preview'. Once on, it will show the currently highlighted slide in the list. If the slide is a movie then it can be played in full within the preview window. The 'Mute Preview' check box can be used to mute the preview in case you are currently running a presentation.

The preview is especially helpful if you need to see what slides are coming up, but cannot remember exactly what they are.

# PRESENTING THE SLIDE SHOW

---







When you have loaded some slides into the Slide list, a presentation can commence.


To display the presentation, choose a display device (TV/monitor) from the pop up menu labeled 'On Screen'. The main screen is the monitor that has the menu bar, all other screens are considered secondary. Once you have chosen a screen turn the display on by clicking the 'Display' check box. If the display screen is the main screen of the computer (i.e. the screen with the menu bar) then it will hide the menu bar, the dock (if OS X) and the Control Center, but bring up a mini-controller that will enable limited control of the presentation (this can be closed if required). The Control Center can be brought to the front using 'Command-Shift-T'.

## Presentation Controls



When the display is on and the list of slides is not empty the buttons used to control the presentation are enabled. These buttons include:

-  **Play** - Start playing the presentation.
-  **Pause** - Stop the presentation, but hold it in position ready to continue.
-  **Stop** - Stop and unload the presentation.
-  **Fast Forward** - Increase the playing speed; each subsequent click doubles the speed. Press play to go back to normal speed.
-  **Fast Rewind** - Reverses the play direction of the current movie (with increased speed). Each subsequent click doubles the speed. Press play to go back to normal speed and direction.
-  **Next** - Move to the next slide immediately.

-  **Previous** - Move to the start of the current slide and any previous slides with subsequent clicks.

The following controls are available all the time:

- **Display** - Turn the display on/off.
- **On Screen** - Chooses the screen to display to.
- **Use Global Picture Display Time** - Turn this on to override individual picture display times with one 'global' setting. Enter the number of seconds to set how long each picture slide is to display for. A value of zero will present the slide indefinitely; this is useful if you want to use 'Next' to progress through the presentation rather than letting it run automatically.
- **Play(All, Selected)** - If 'All' is chosen then all the slides in the list will be presented. If 'Selected' is chosen then only the selected slides in the list will be presented.
- **Loop** - Loop the entire presentation (if you would like to only loop one slide, then only have one slide selected).
- **Volume** - adjust the volume of the presentation.
- **Mute** - Quickly turns the presentation sound off.

## Presentation Modes

- **Automatic** - In automatic mode the presentation progresses through the slides according to how they have been selected and the display times chosen. This is the default mode.
- **Manual** - In manual mode the presentation will only progress to the next slide if you tell it to (i.e. you press 'Next'). This mode is available from the 'Control' Menu. It is simply a macro that turns the Global over-ride on and sets a picture display time of '0'. Movies will automatically play, as they also do in automatic mode.

## Mini Controller

The mini controller is available at all times, but is most useful when only one display is available.

